

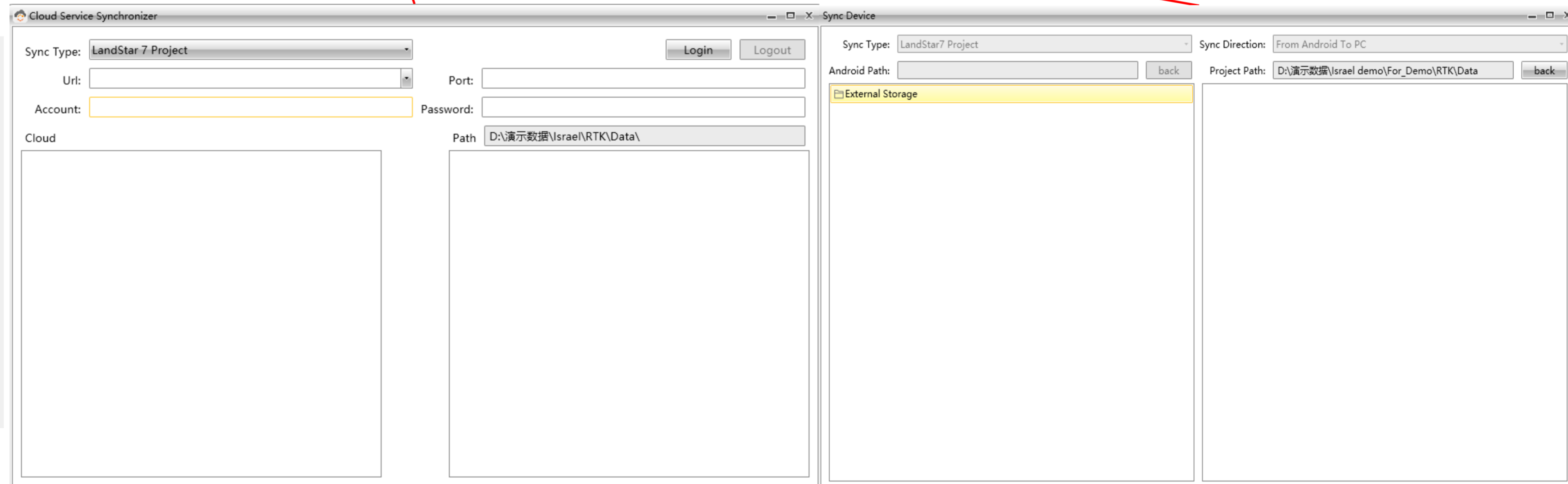
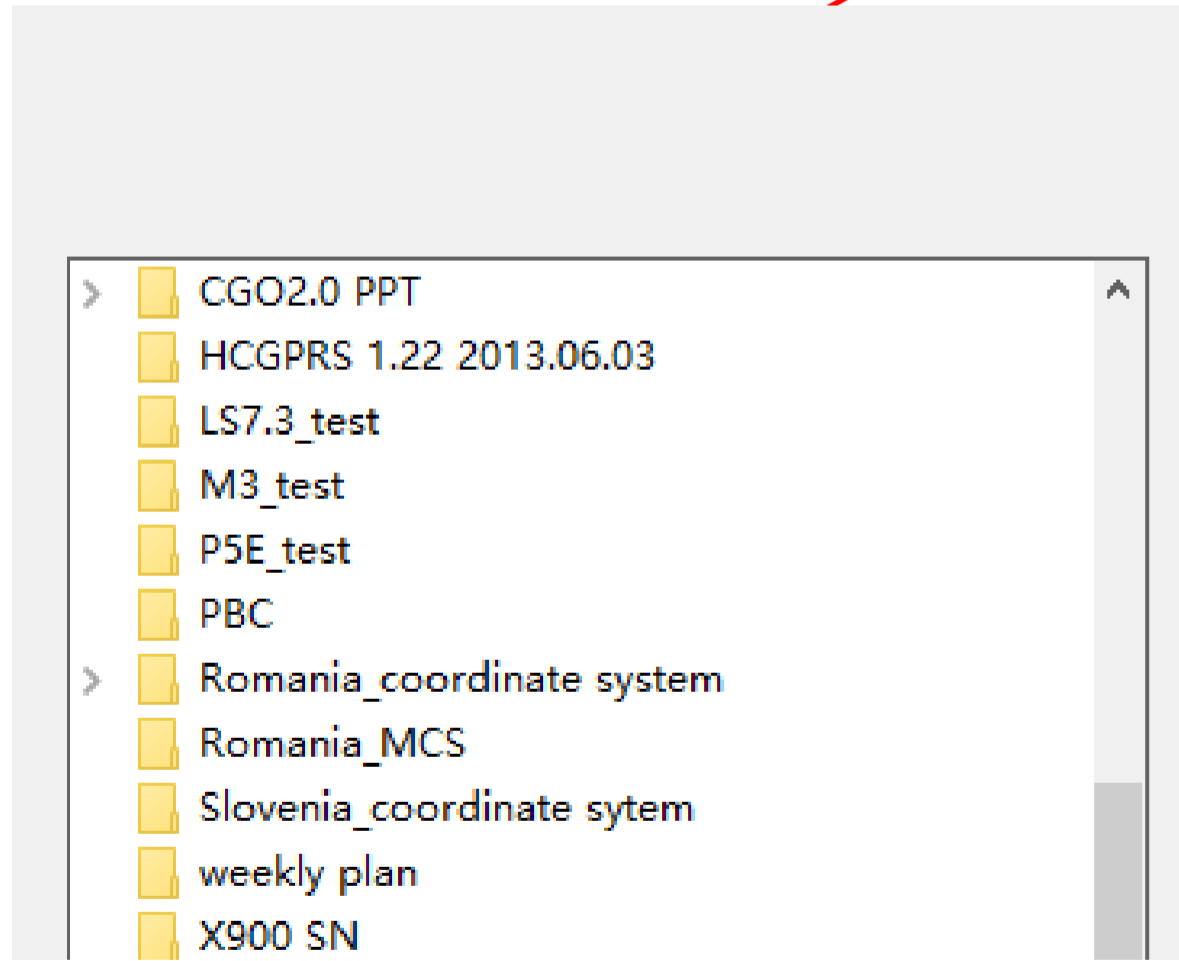
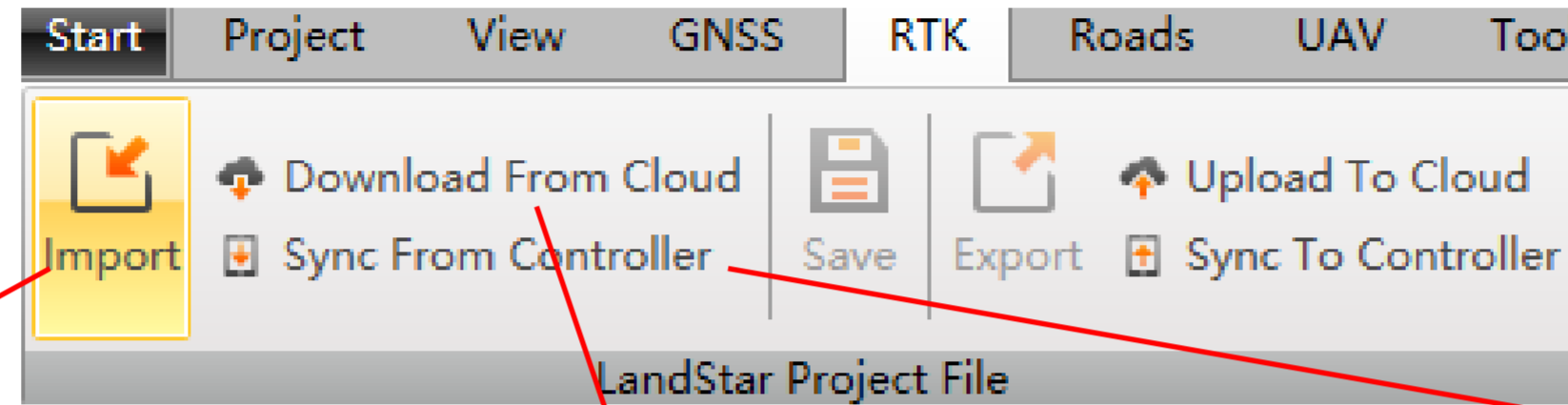
CHC Navigation Ltd

CGO2 Work Flow – LS7 data processing

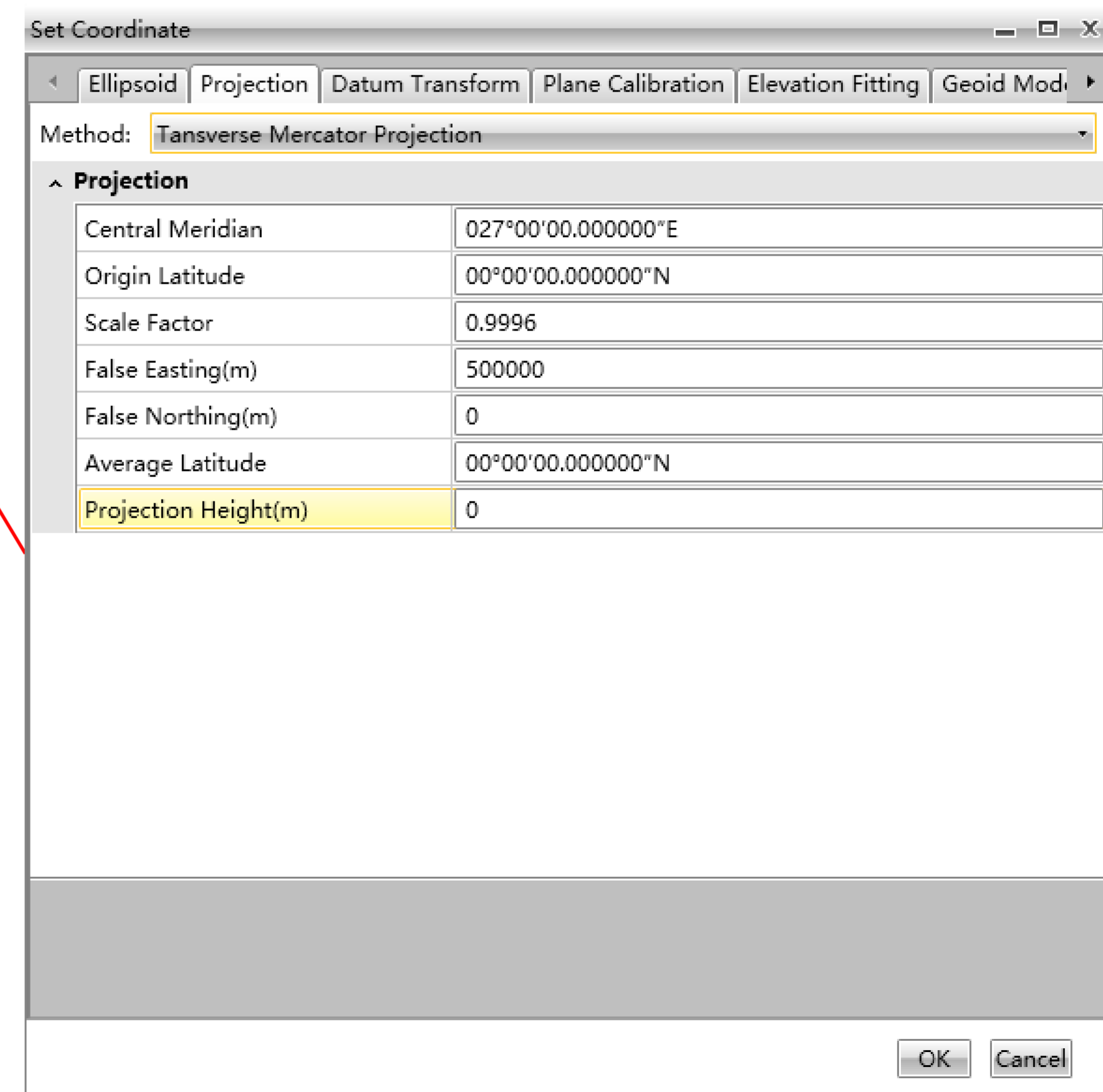
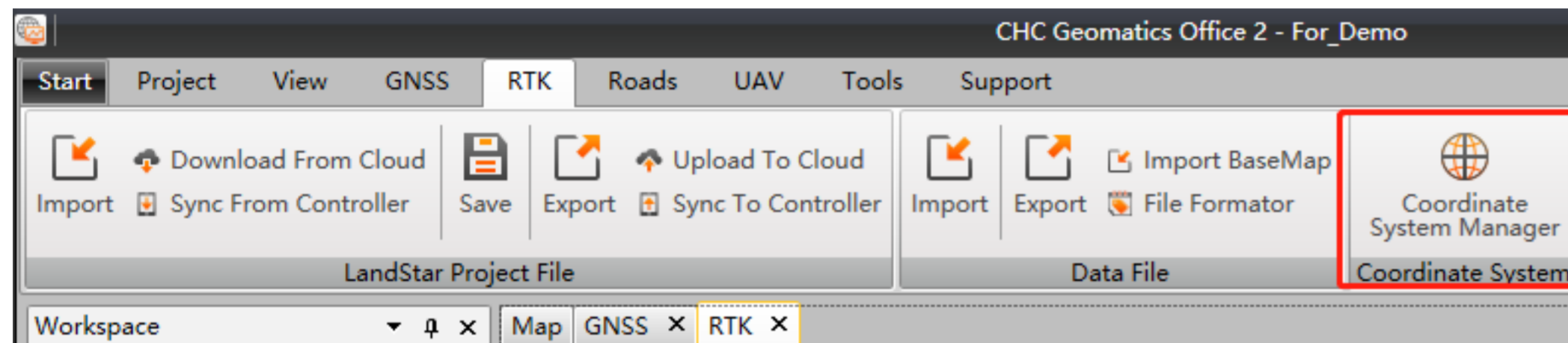
Step1: Create one new project

Please refer to [CGO2 Work Flow - Projects](#)

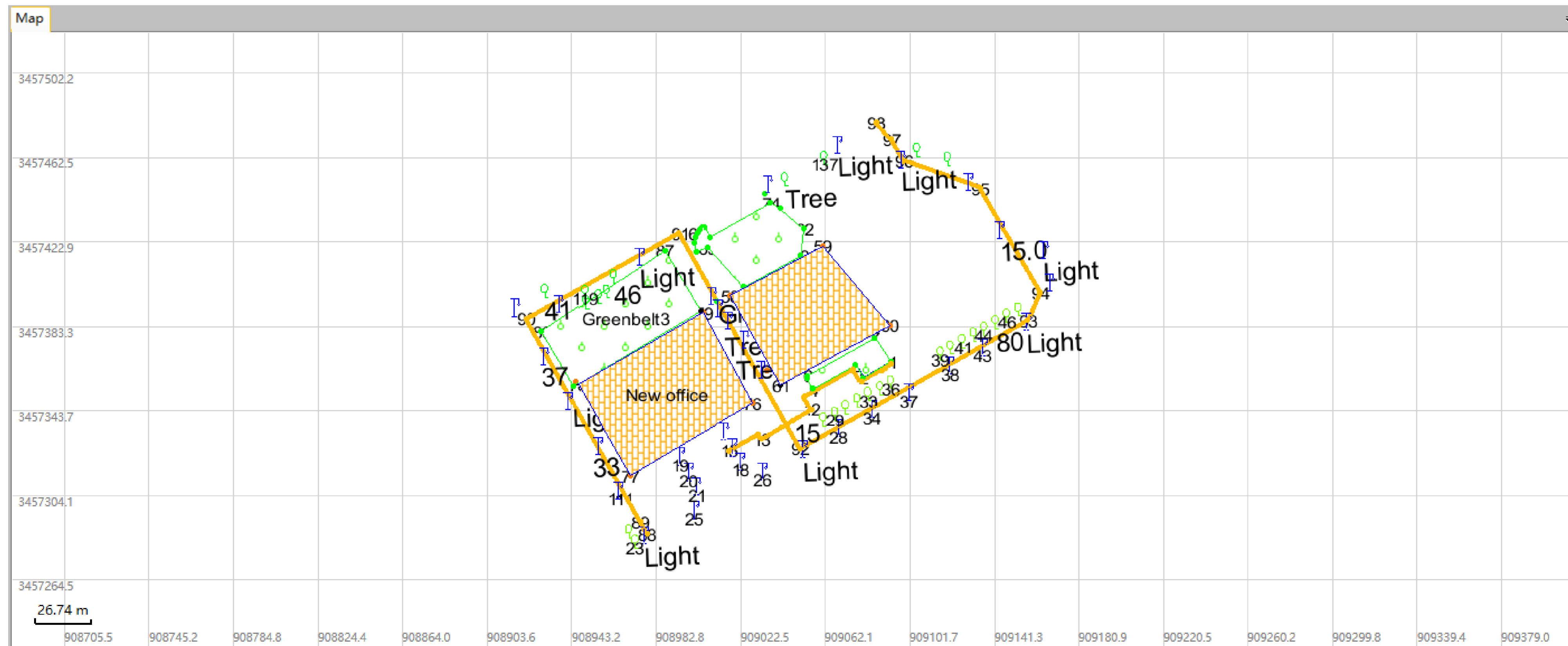
Step2: Import LS7 project



Tools - Manage coordinate system

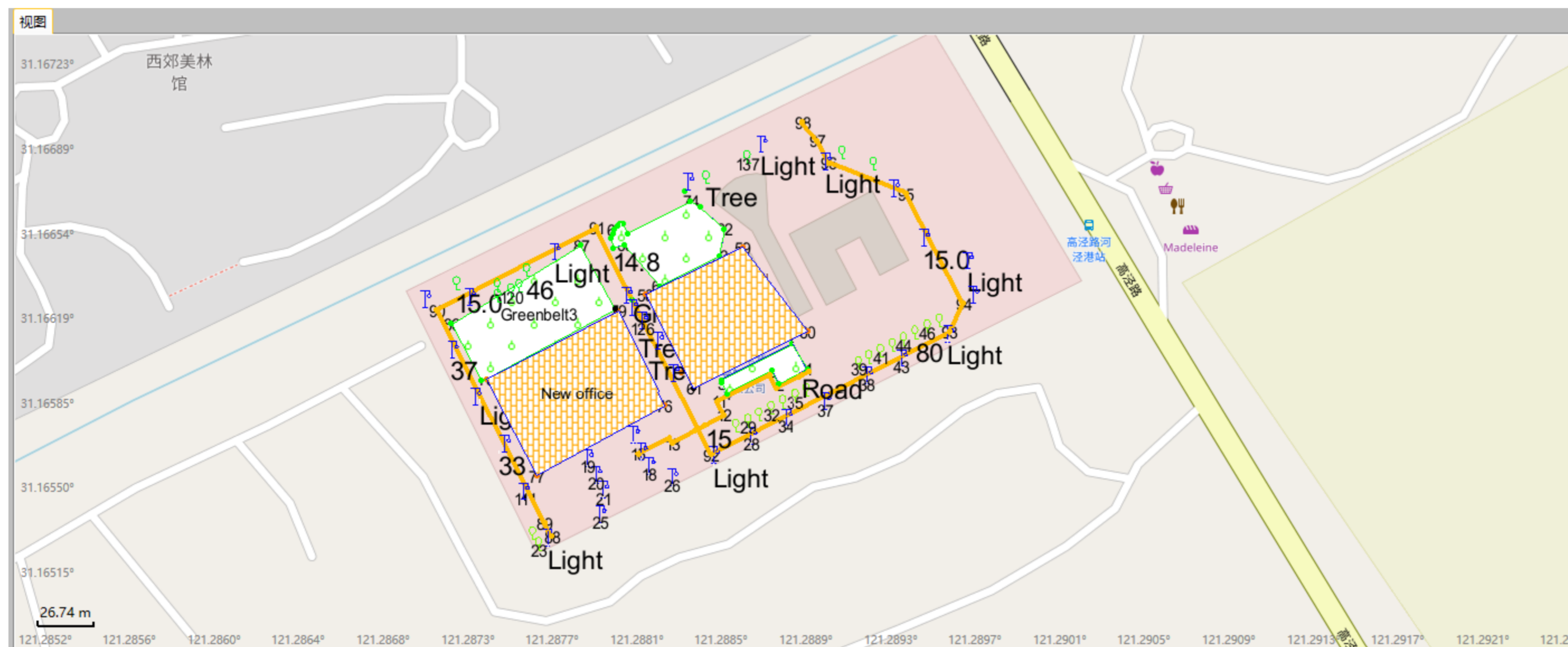


Tools - Check in the Map view

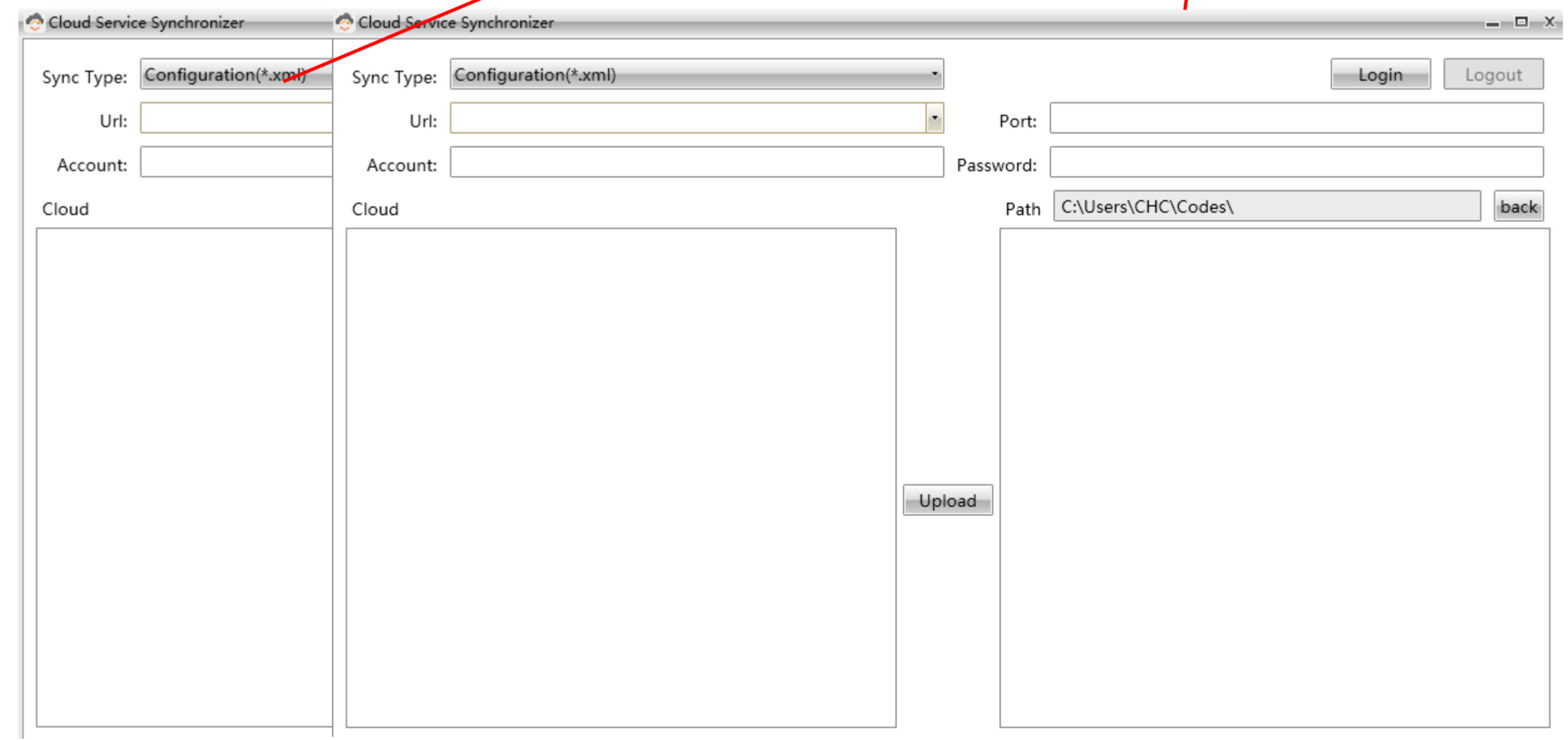
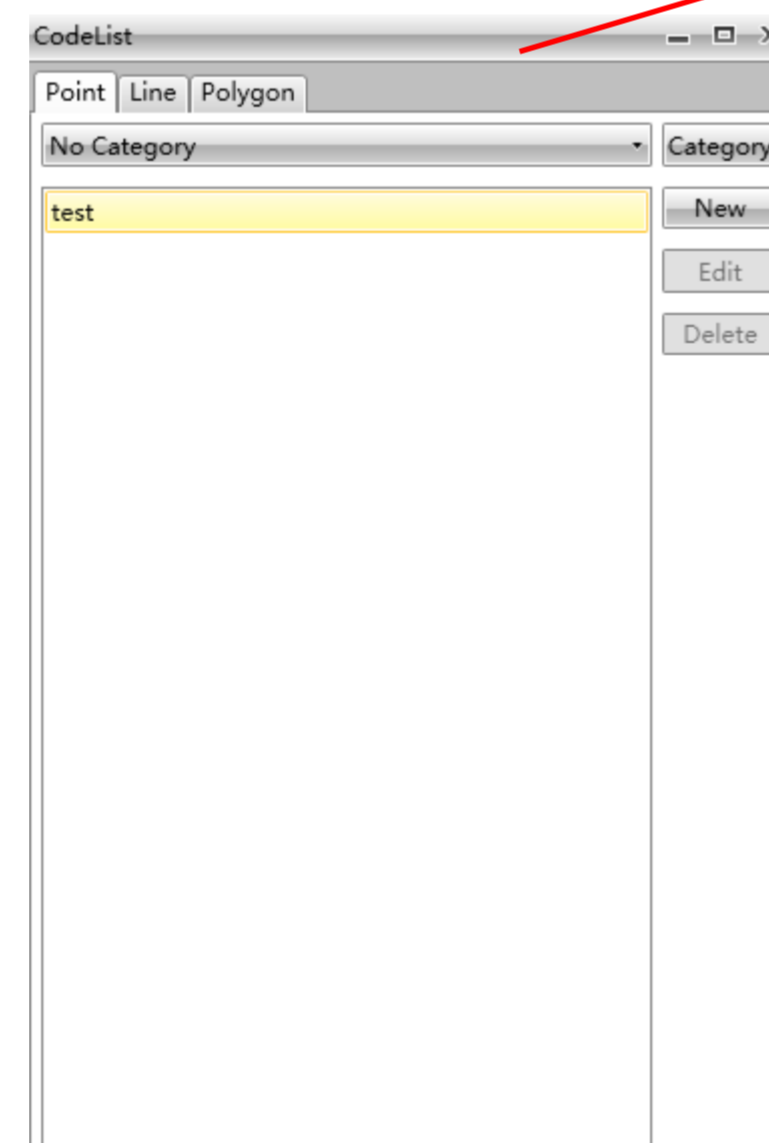
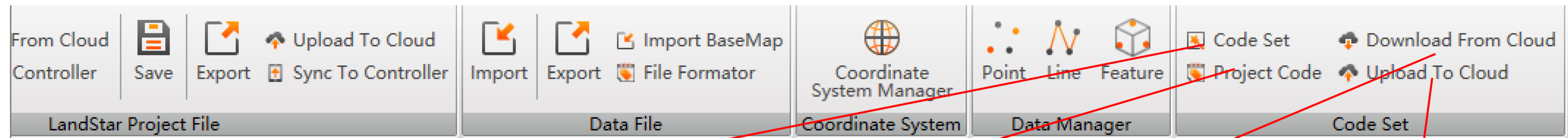


Tools - Upload online map

Please refer to [CGO Work Flow – Online Map](#)



Tools – Code list



LandStar Project File

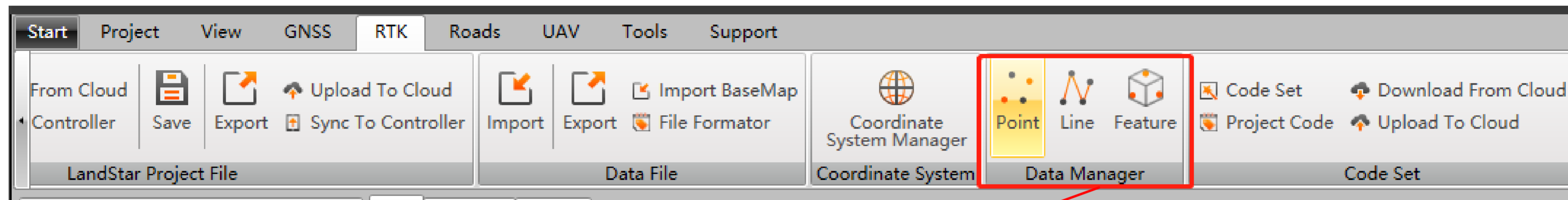
Data File

Coordinate System Manager

Data Manager

Code Set

Tools – Data Management



RTK x

#	Name	Code	WGS84 Lat	WGS84 Lon	WGS84 H	WGS84 X	WGS84 Y	WGS84 Z
1	base_0		000°00'0.0000000"N	000°00'0.0000000"E	0	0	0	0
2	1		063°22'52.2036444"N	026°24'25.9051161"E	350.4034	2566570.18496	1274458.29885	5679453.8
3	control 1		000°00'0.0324698"N	022°30'40.5542681"E	1	5892151.14619	2441966.26052	0.99731

Page 1 of 1

Add Delete MultiChoose

0 Warnings 9 Notes

lap Successfully!

Property

A-Z

General

Point Name: KSHO

Code: KSHO

Coordinate System

Coordinate Sol: WGS84 Coordinate

Coordinate Typ: WGS-84

Geodetic Coor.

Lat.: 032°10'16.1689495

Lon.: 035°05'46.7286062

Ellipsoid(m): 355.0656

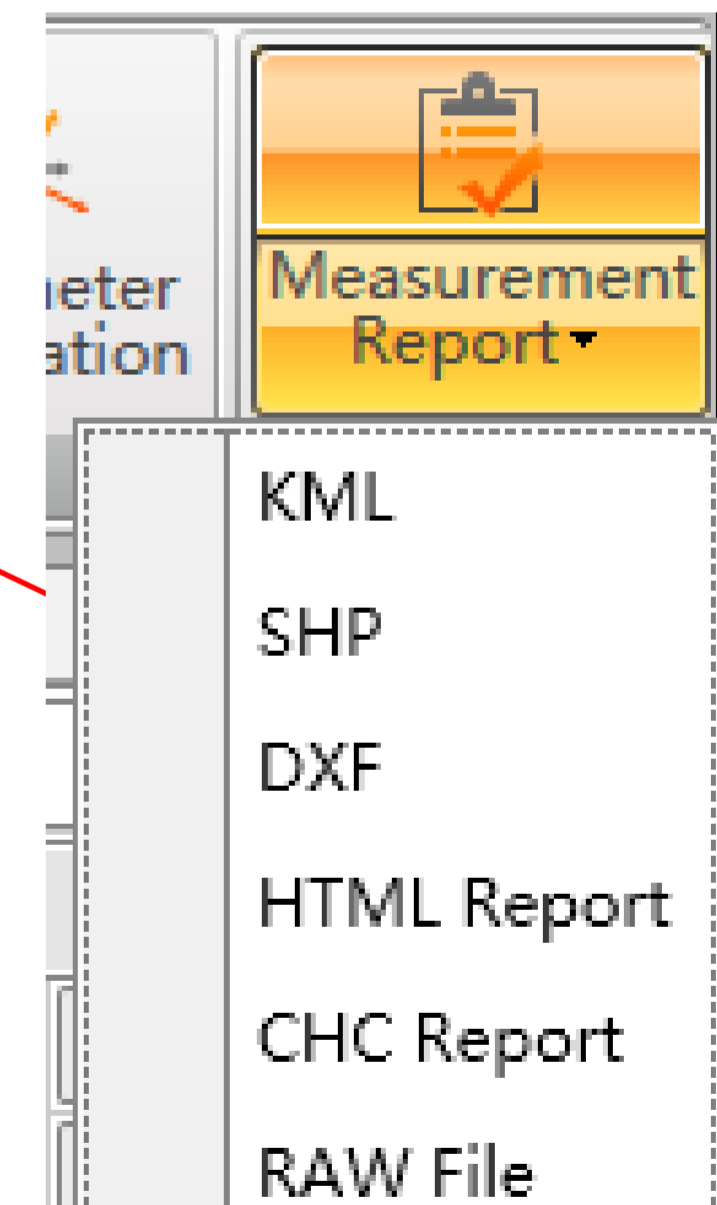
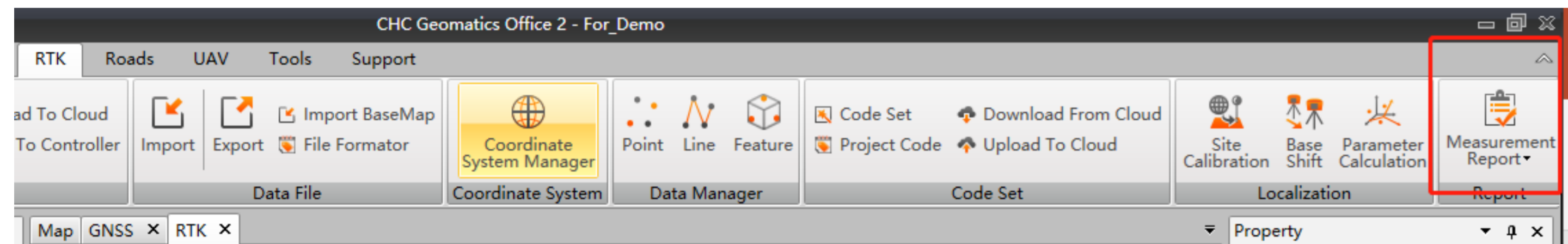
Space Coor.

X(m): 4421707.77875

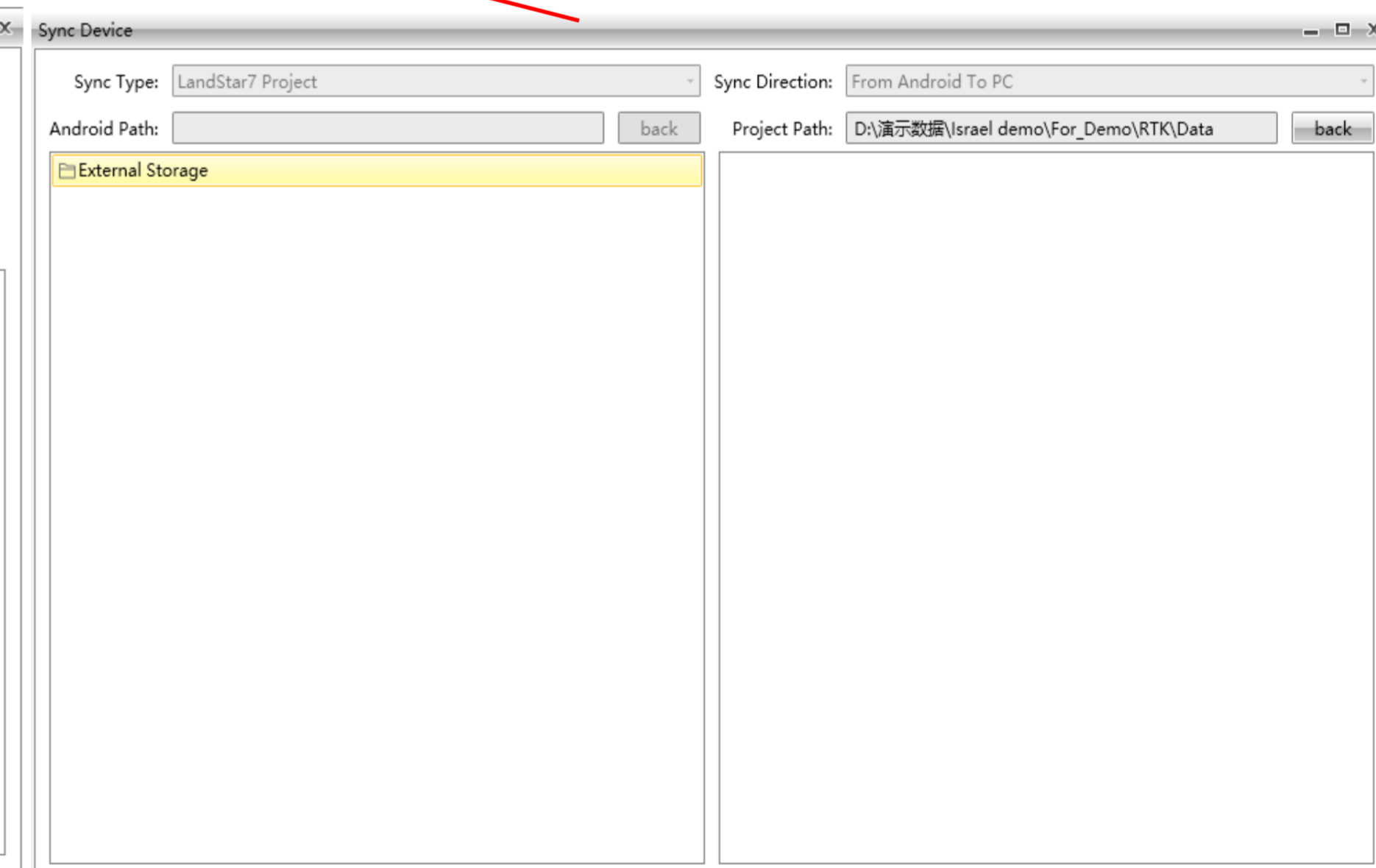
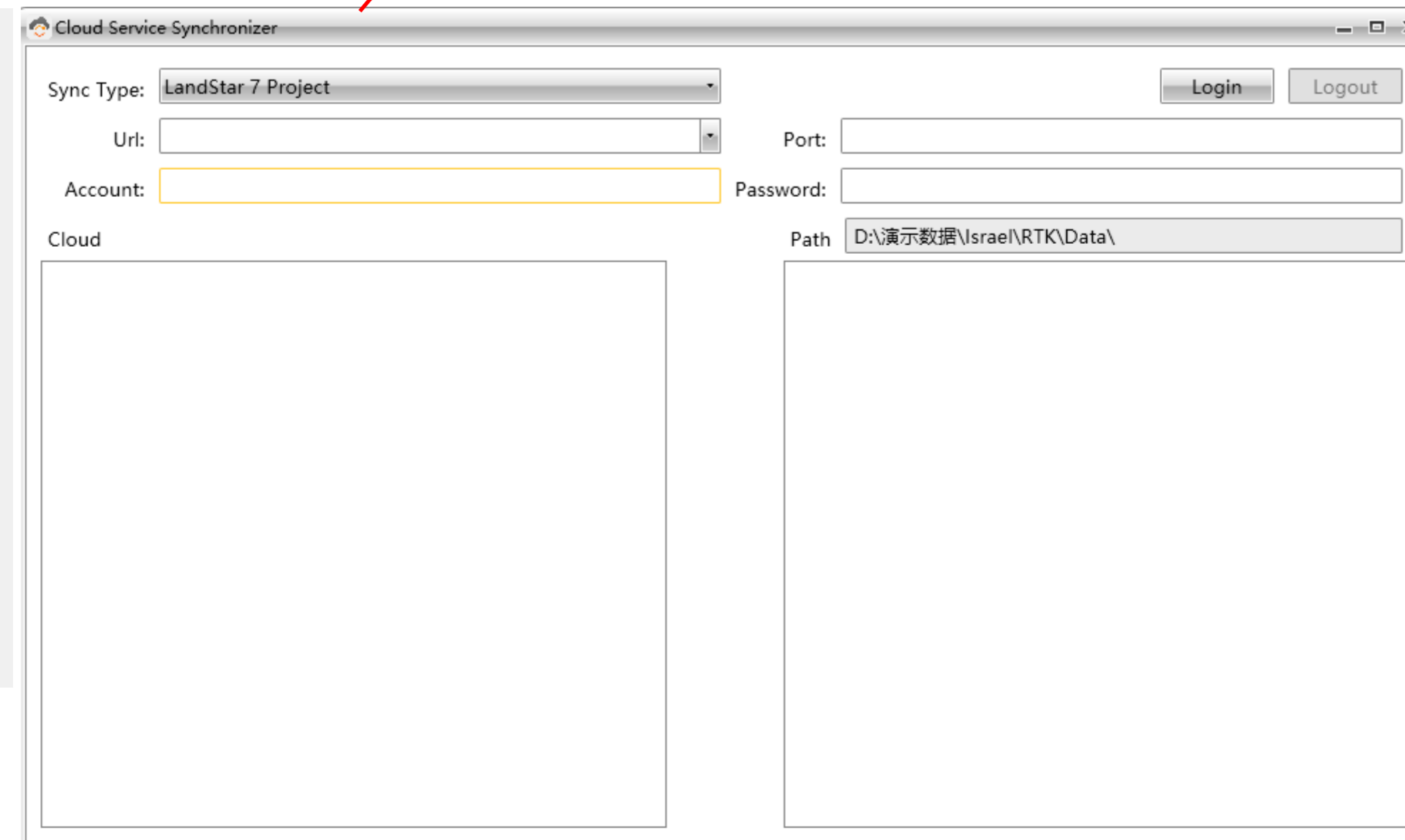
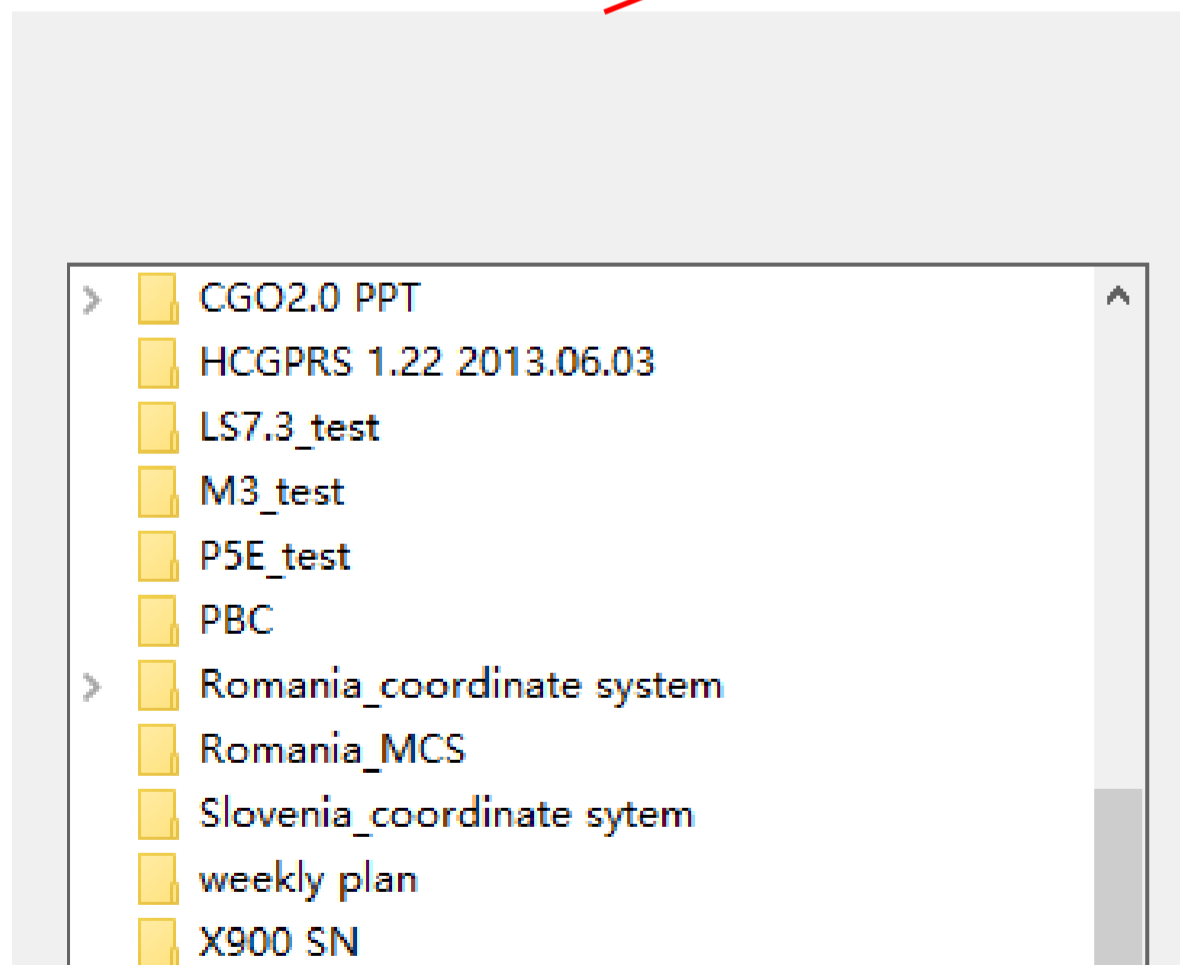
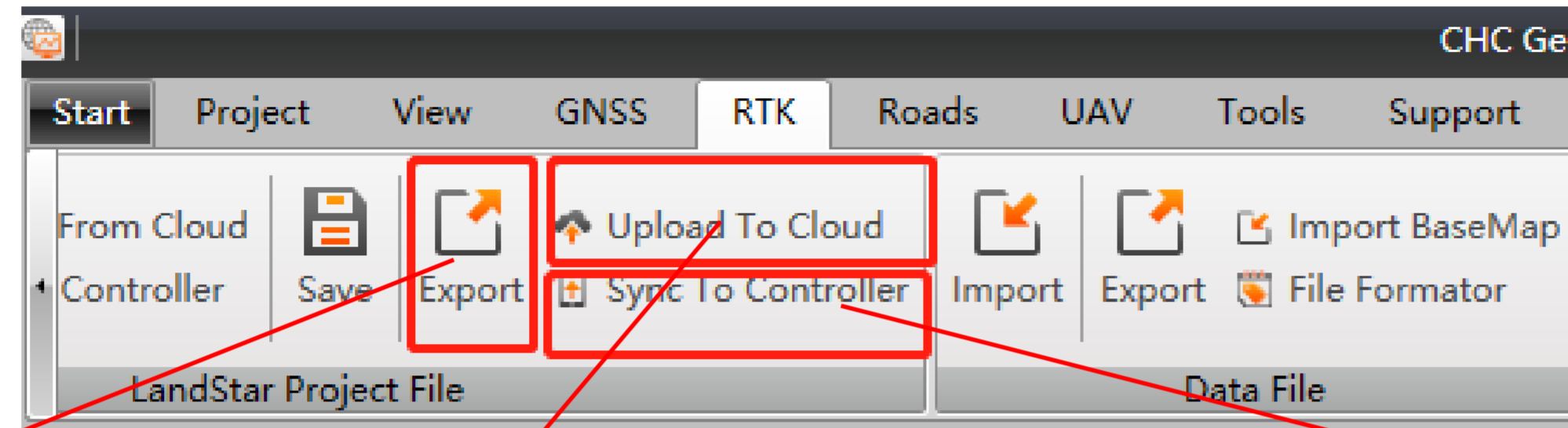
Y(m): 3107203.26875

Z(m): 3376700.90840

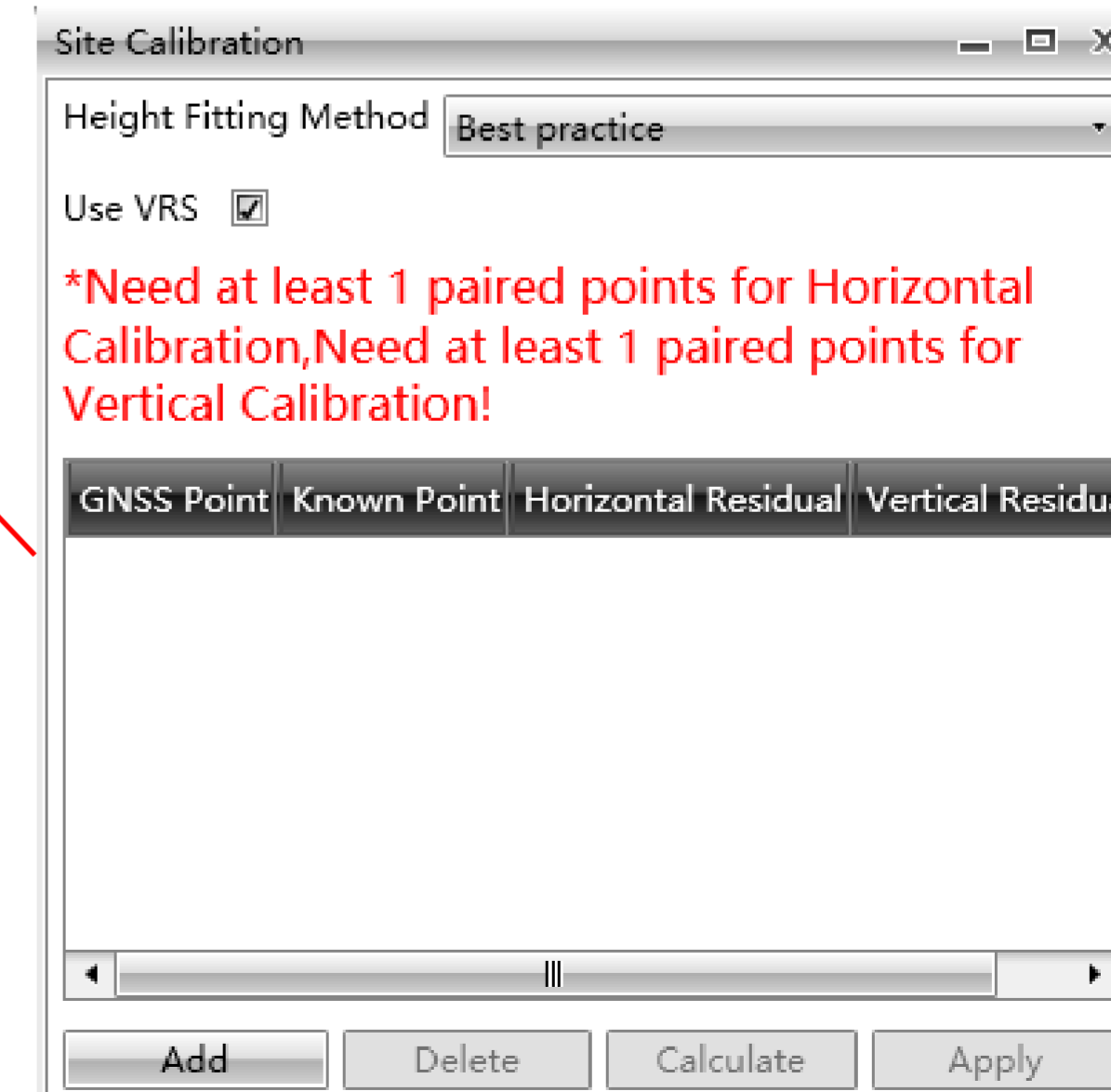
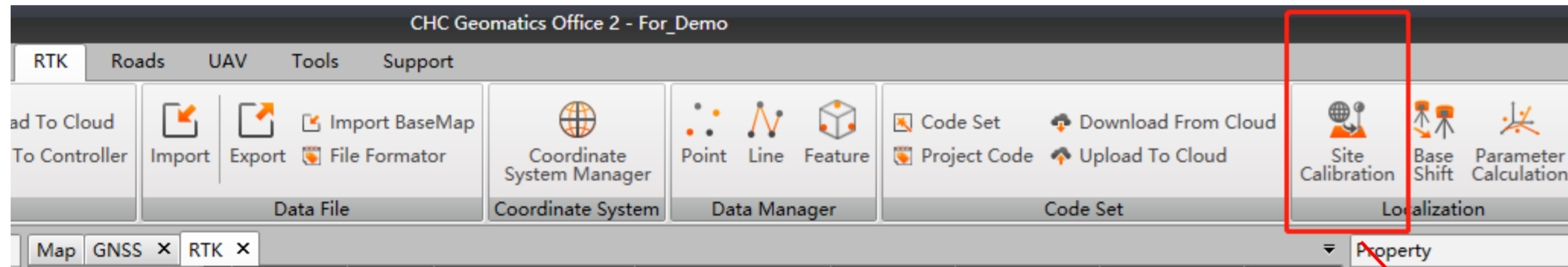
Tools - Report



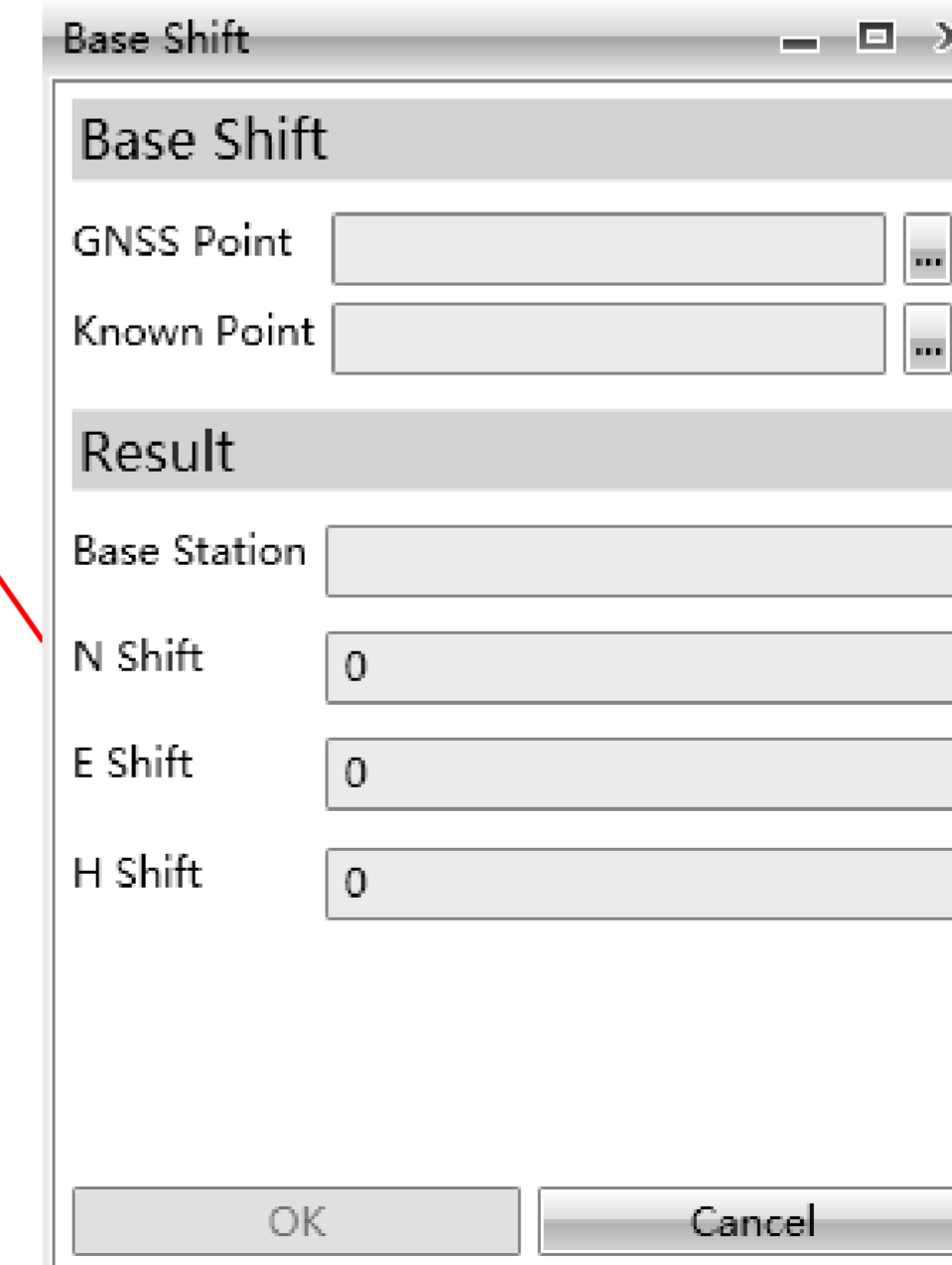
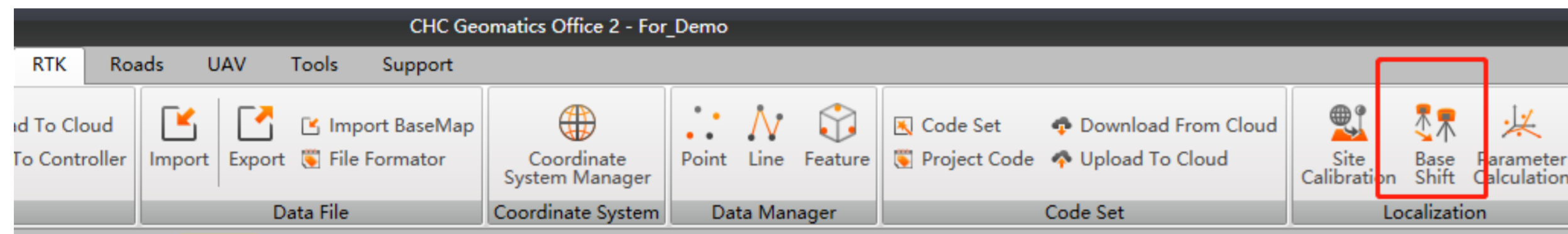
Tools – Data sharing



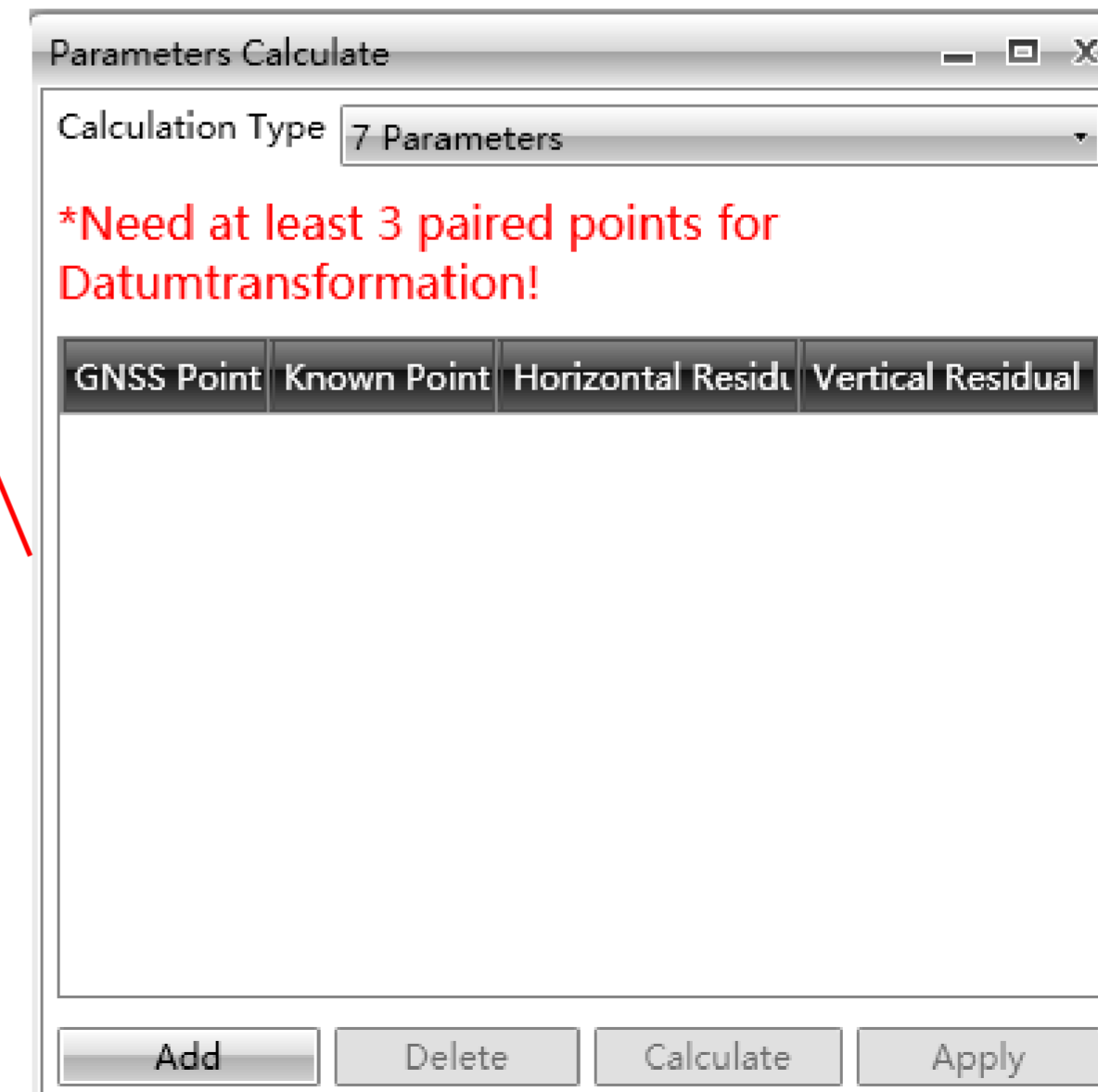
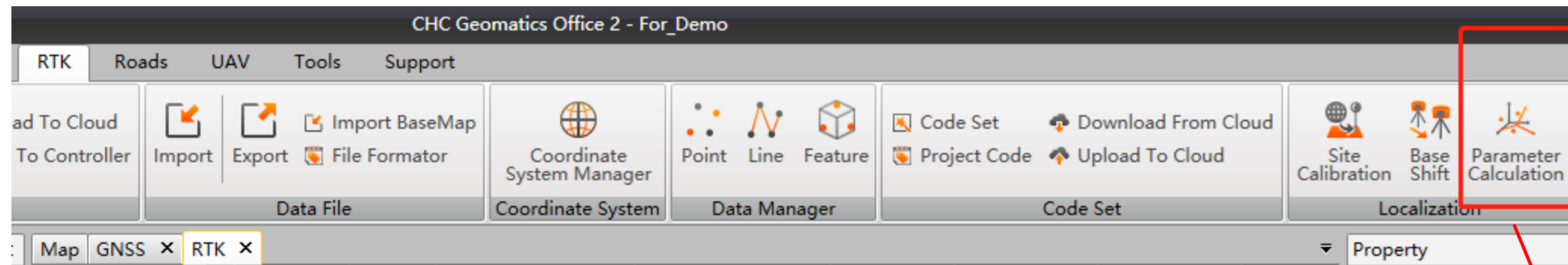
Tools – Site Calibration



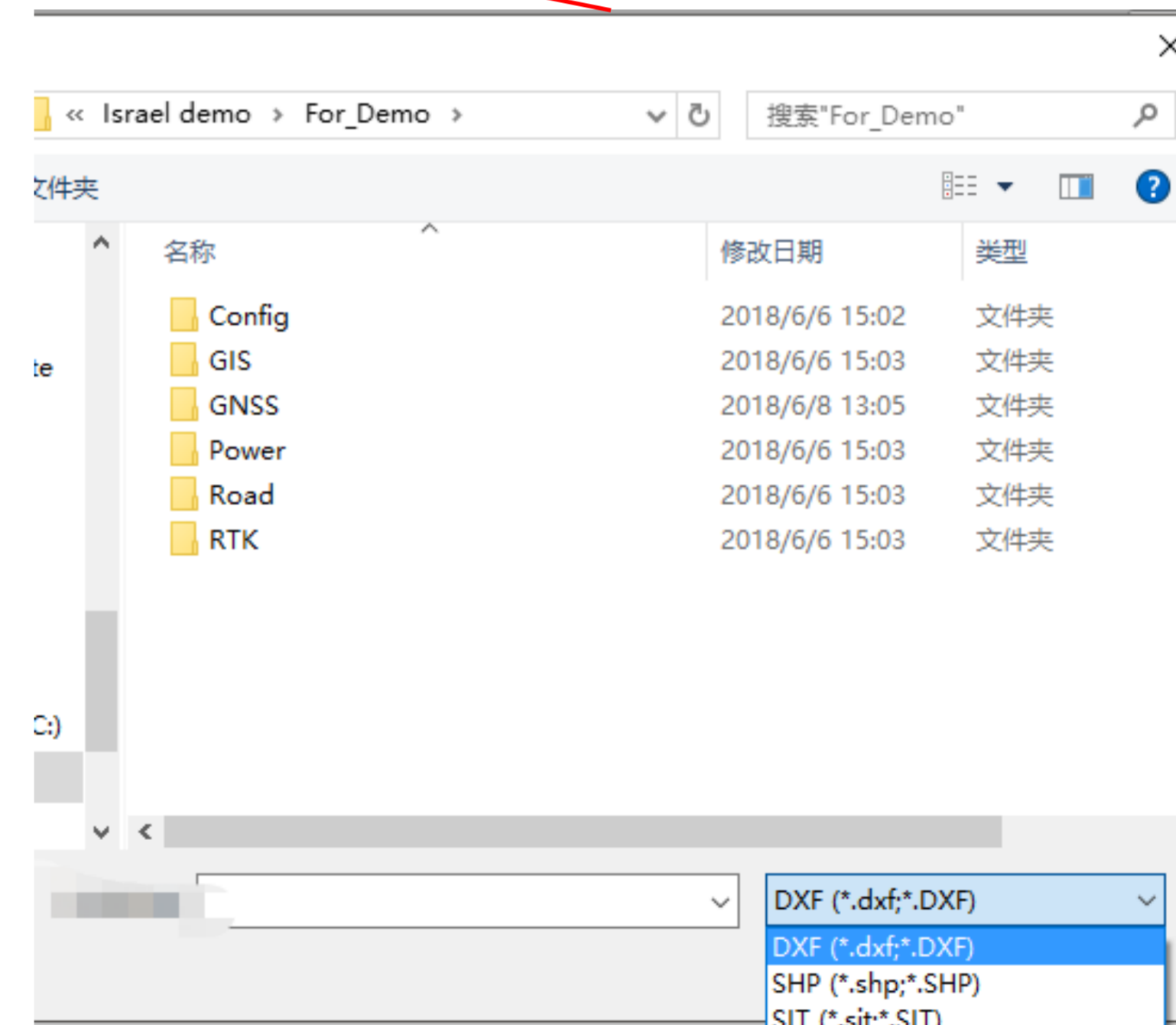
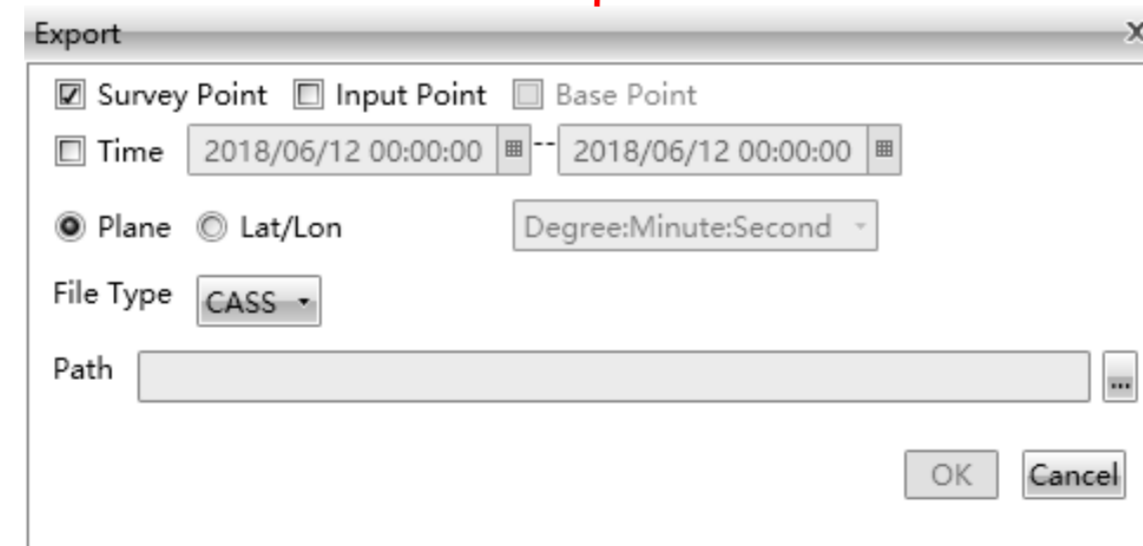
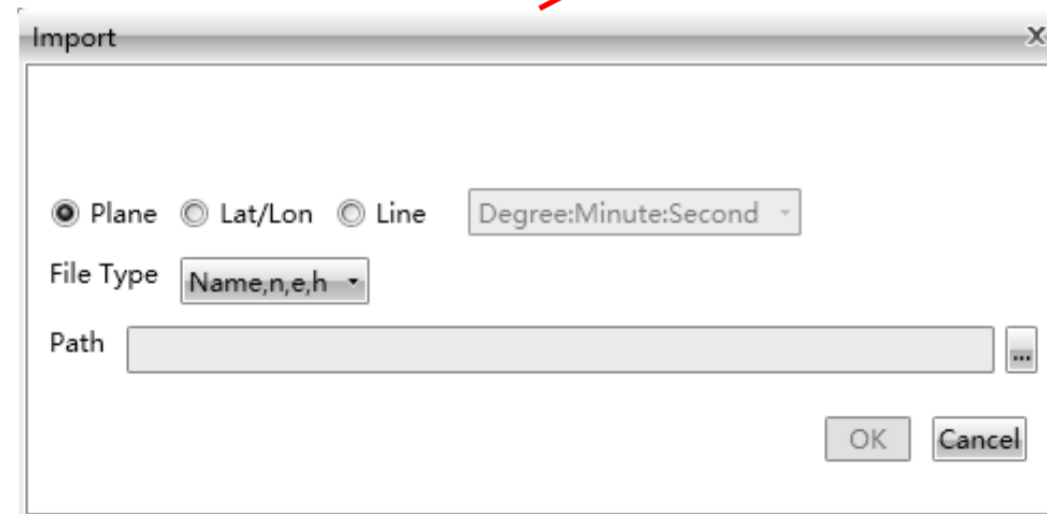
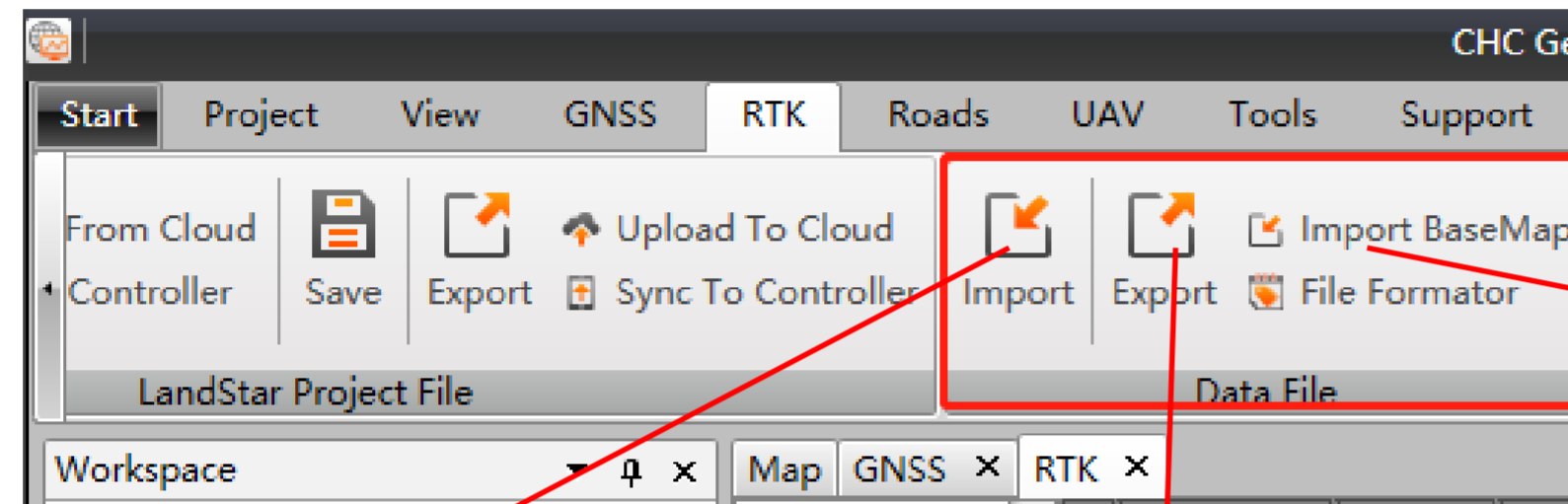
Tools – Base Shift



Tools – Parameters Calculation(Datum)



Tools – Import/Export data from other sources



In the United States, contact

iGage Mapping Corporation
+1-801-412-0011

www.igage.com/cgo2

For demos, pricing and additional information.

30-day fully functional demos are available by software code.

THANK YOU

CHCNAV

Make your work more efficient